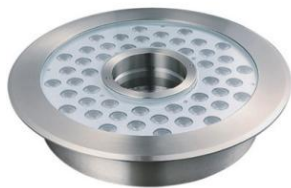


PRODUCT DATASHEET

OUTDOOR LIGHTING | OUTDOOR- UNDERWATER

Outdoor lighting | Recessed mounted underwater light | 48w | Round shape
Code# OTUW18001-48



Areas of Application

- Swimming pool
- Fountains
- Aquariums
- Waterscape sculpture
- Waterfalls
- Rivers

Product Features

- IP68 waterproof
- High luminous efficacy, high CRI
- Uniform light output and good consistency
- Anti-oxidation, anti-corrosion
- CCT optional and dimmable
- Easy and quick installation
- Built-in radiator, good heat dissipation

Complete Product Data

Code#	OTUW18001-48
Wattage	48w
Installation Type	Recessed
Dimension	φ300mm*76mm
Cutout	/
IP Rating	IP68
Luminous Flux	3360lm
Beam Angle	5°, 10°, 15°, 25°, 45°, 60°
Working Temperature	-25°C ~55°C
Certificates	/
Warranty	3 Years
Packing Size	/

Driver Data

Driver Brand	Tridonic, Osram, Philips, Lifud, Euchips, Eaglerise, etc.
Input Voltage	/
Output Voltage	/
Output Current	/
Power Factor	>0.5 as standard; >0.9 optional
Efficiently	87% @230v
IP Rating	IP20
Dimmable	Non-Dimmable/Triac/0-10v/Dali Optional
Free Flicker	Yes
Certificates	CE, CB, CCC, ENEC
Warranty	3/5 Years

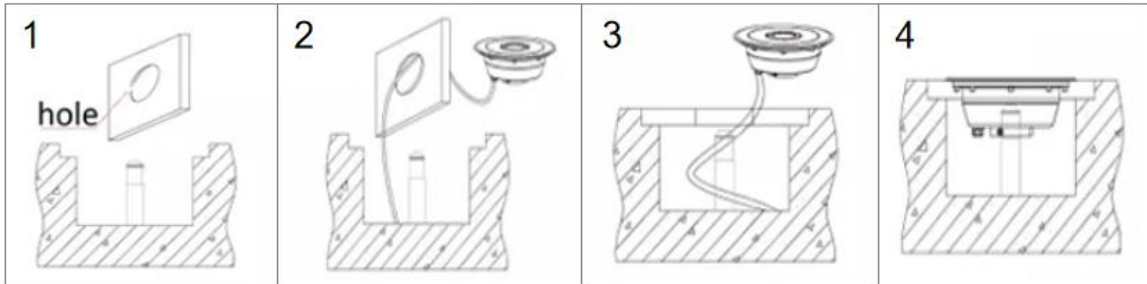
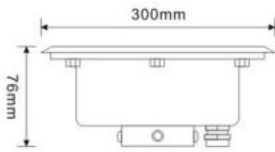
Material&Housing Data

Housing Color	Silver
Reflector Color	/
Housing Material	316 stainless steel

Photometric Data

LED chip brand	Cree/ Osram /Bridgelux/ Epistar etc.
Chip Type	SMD
Color Temperature	2700K, 3000K, 4000K, 6000K
CRI	>80
Life time	>50000Hrs
Lumens efficacy	100-120lm/w

Dimensions&Installation



PLEASE FIND A QUALIFIED ELECTRICIAN FOR INSTALLATION. Please read the instructions before you install and use the underwater light.

1. Make sure the power is turned off in which you are installing the products.
2. Fix the nozzle and dig a hole on the floor. (Fig 1)
3. Guide all wire through the hole, connect the input terminal of the light to the output terminal of the DC24V driver, and connect the drive to main power supply. (Fig 2)
4. Cover the nozzle with floor. (Fig 3)
5. Fix the light into the floor with screws. (Fig 4)
6. Restore power at the source and the installation is complete.