

# PRODUCT DATASHEET

## OUTDOOR LIGHTING | OUTDOOR- UNDERWATER

Outdoor lighting | Recessed mounted underwater light | 24w | Round shape  
Code# OTUW18001-24



---

### Areas of Application

- Swimming pool
- Fountains
- Aquariums
- Waterscape sculpture
- Waterfalls
- Rivers

---

### Product Features

- IP68 waterproof
- High luminous efficacy, high CRI
- Uniform light output and good consistency
- Anti-oxidation, anti-corrosion
- CCT optional and dimmable
- Easy and quick installation
- Built-in radiator, good heat dissipation

---

## Complete Product Data

<b>Code#</b>	OTUW18001-24
<b>Wattage</b>	24w
<b>Installation Type</b>	Recessed
<b>Dimension</b>	φ250mm*76mm
<b>Cutout</b>	/
<b>IP Rating</b>	IP68
<b>Luminous Flux</b>	1680lm
<b>Beam Angle</b>	5°, 10°, 15°, 25°, 45°, 60°
<b>Working Temperature</b>	-25°C ~55°C
<b>Certificates</b>	/
<b>Warranty</b>	3 Years
<b>Packing Size</b>	/

## Driver Data

<b>Driver Brand</b>	Tridonic, Osram, Philips, Lifud, Euchips, Eaglerise, etc.
<b>Input Voltage</b>	/
<b>Output Voltage</b>	/
<b>Output Current</b>	/
<b>Power Factor</b>	>0.5 as standard; >0.9 optional
<b>Efficiently</b>	87% @230v
<b>IP Rating</b>	IP20
<b>Dimmable</b>	Non-Dimmable/Triac/0-10v/Dali Optional
<b>Free Flicker</b>	Yes
<b>Certificates</b>	CE, CB, CCC, ENEC
<b>Warranty</b>	3/5 Years

## Material&Housing Data

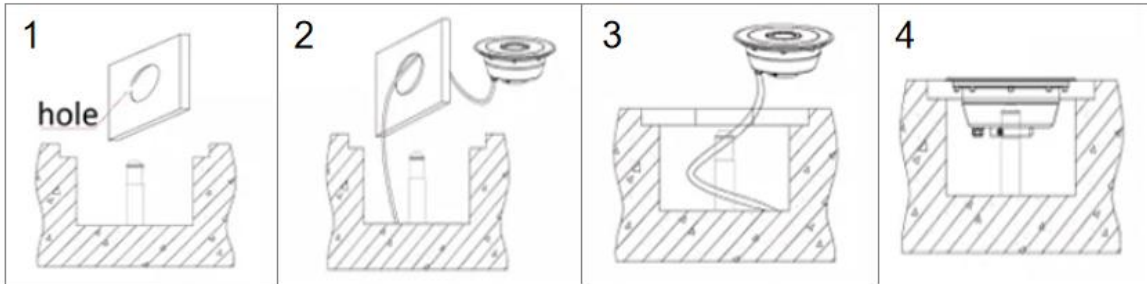
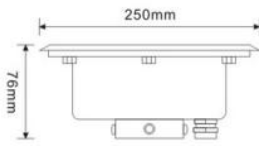
<b>Housing Color</b>	Silver
<b>Reflector Color</b>	/
<b>Housing Material</b>	316 stainless steel

## Photometric Data

<b>LED chip brand</b>	Cree/ Osram /Bridgelux/ Epistar etc.
<b>Chip Type</b>	SMD
<b>Color Temperature</b>	2700K, 3000K, 4000K, 6000K
<b>CRI</b>	>80
<b>Life time</b>	>50000Hrs
<b>Lumens efficacy</b>	100-120lm/w

---

## Dimensions&Installation



**PLEASE FIND A QUALIFIED ELECTRICIAN FOR INSTALLATION.** Please read the instructions before you install and use the underwater light.

1. Make sure the power is turned off in which you are installing the products.
2. Fix the nozzle and dig a hole on the floor. (Fig 1)
3. Guide all wire through the hole, connect the input terminal of the light to the output terminal of the DC24V driver, and connect the drive to main power supply. (Fig 2)
4. Cover the nozzle with floor. (Fig 3)
5. Fix the light into the floor with screws. (Fig 4)
6. Restore power at the source and the installation is complete.