

# PRODUCT DATASHEET

## LINEAR LIGHTS | DAMP-PROOF LUMINAIRES

Linear light | Surface mounted linear light | 20w | Square shape

Code# DPL15008-20



---

### Areas of Application

- Hospital
- Shops
- Office
- Warehouse
- Factory, garage, laboratory, commercial building

---

### Product Features

- Full PC material design
- IP65 waterproof
- High luminous efficacy, high CRI
- Energy savings of up to 90% compared to halogen lamp spotlights
- CCT optional and dimmable
- Uniform light output and good consistency
- Anti-glare, without flicker
- Easy and quick installation

---

## Complete Product Data

|                            |                 |
|----------------------------|-----------------|
| <b>Code#</b>               | DPL15008-20     |
| <b>Wattage</b>             | 20w             |
| <b>Installation Type</b>   | Surface         |
| <b>Dimension</b>           | 600mm*80mm*72mm |
| <b>Cutout</b>              | /               |
| <b>IP Rating</b>           | IP65            |
| <b>Luminous Flux</b>       | 2200lm          |
| <b>Beam Angle</b>          | 120°            |
| <b>Working Temperature</b> | -25°C ~55°C     |
| <b>Certificates</b>        | /               |
| <b>Warranty</b>            | 3 Years         |
| <b>Packing Size</b>        | /               |

## Driver Data

|                       |   |
|-----------------------|---|
| <b>Driver Brand</b>   | Tridonic, Osram, Philips, Lifud, Euchips, Eaglerise, etc. |
| <b>Input Voltage</b>  | 100-250VAC 50/60hz  |
| <b>Output Voltage</b> | 27-42Vdc  |
| <b>Output Current</b> | 500mA   |
| <b>Power Factor</b>   | >0.5 as standard; >0.9 optional                           |
| <b>Efficiently</b>    | 87% @230v   |
| <b>IP Rating</b>      | IP20  |
| <b>Dimmable</b>       | Non-Dimmable/Triac/0-10v/Dali Optional                    |
| <b>Free Flicker</b>   | Yes   |
| <b>Certificates</b>   | CE, CB, CCC, ENEC   |
| <b>Warranty</b>       | 3/5 Years   |

## Material&Housing Data

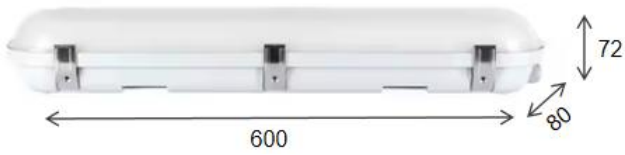
|                         |             |
|-------------------------|-------------|
| <b>Housing Color</b>    | Grey+ White |
| <b>Reflector Color</b>  | /           |
| <b>Housing Material</b> | PC          |

## Photometric Data

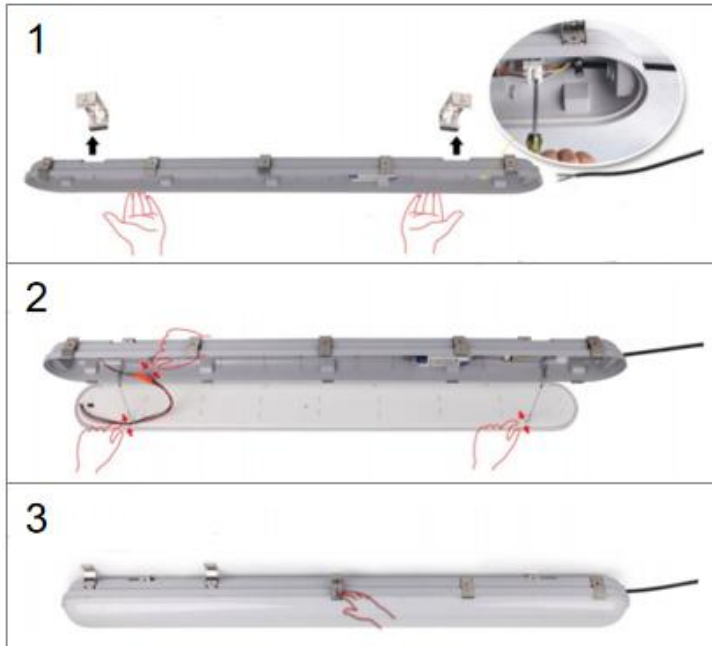
|                          |                                      |
|--------------------------|--------------------------------------|
| <b>LED chip brand</b>    | Cree/ Osram /Bridgelux/ Epistar etc. |
| <b>Chip Type</b>         | SMD                                  |
| <b>Color Temperature</b> | 3000K, 4000K, 6000K                  |
| <b>CRI</b>               | >80                                  |
| <b>Life time</b>         | >50000Hrs                            |
| <b>Lumens efficacy</b>   | 100-120lm/w                          |

---

## Dimensions&Installation



**PLEASE FIND A QUALIFIED ELECTRICIAN FOR INSTALLATION.** Please read the instructions before you install and use the linear light.



1. Make sure the power is turned off in which you are installing the products.
2. Fix the bottom shell to the ceiling or wall and connect the wire. (Fig 1)
3. Fix the cover to the bottom shell. (Fig 2)
4. Close the cover and the clips. (Fig 3)
5. Restore power at the source and the installation is complete.