

PRODUCT DATASHEET

DOWNLIGHTS | SUSPENDED & SURFACE MOUNTED

Downlights | Suspended spotlight | 20w | Round shape

Code# CR12013-12060



Areas of Application

- Club
- Cinema
- Gym
- Gallery
- Hotel
- Shops
- Living room, restaurant, residential interiors

Product Features

- High luminous efficacy, high CRI
- Energy savings of up to 90% compared to halogen lamp spotlights
- CCT optional and dimmable
- Aluminum housing, height is customized from 150mm-1000mm
- Uniform light output and good consistency
- Flicker free
- Easy and quick installation

Complete Product Data

Code#	CR12013-12060
Wattage	20w
Installation Type	Suspended
Dimension	φ120*H600mm
Cutout	/
IP Rating	IP20
Luminous Flux	1400lm
Beam Angle	15°, 24°, 36°
Working Temperature	-25°C ~55°C
Certificates	/
Warranty	3 Years
Packing Size	/

Driver Data

Driver Brand	Tridonic, Osram, Philips, Lifud, Euchips, Eaglerise, etc.
Input Voltage	100-250VAC 50/60hz
Output Voltage	30-42Vdc
Output Current	250mA
Power Factor	>0.5 as standard; >0.9 optional
Efficiently	87% @230v
IP Rating	IP20
Dimmable	Non-Dimmable/Triac/0-10v/Dali Optional
Free Flicker	Yes
Certificates	CE, CB, CCC, ENEC
Warranty	3/5 Years

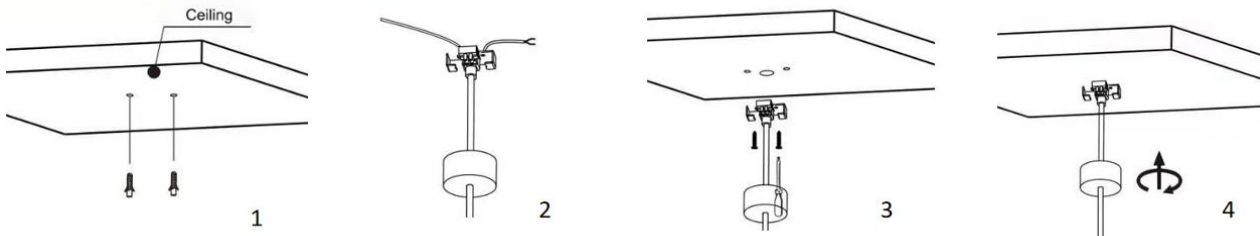
Material&Housing Data

Housing Color	White/ Black
Reflector Color	White/ Black
Housing Material	Aluminum

Photometric Data

LED chip brand	Cree/ Osram /Bridgelux/ Epistar etc.
Chip Type	COB
Color Temperature	2700K, 3000K, 4000K, 5000K, 6000K
CRI	>80
Life time	>50000Hrs
Lumens efficacy	100-120lm/w

Dimensions&Installation



PLEASE FIND A QUALIFIED ELECTRICIAN FOR INSTALLATION. Please read the instructions before you install and use the downlight.

1. Make sure the power is turned off in which you are installing the products.
2. Prepare the accessories for suspended installation. (Fig 1)
3. Install a suspension wire on the lamp body(Fig 2)
3. Install the bracket on the ceiling. (Fig 3)
5. Connect the electronic cable L & N from indoor with the terminal on the lamps and connect the suspension wire to the bracket (while there is grounding wire, same methods).
6. Fix the entire base with screws, restore power at the source and the installation is complete. (Fig 4)