

# PRODUCT DATASHEET

## DOWNLIGHTS | SUSPENDED & SURFACE MOUNTED

Downlights | Suspended spotlight | 7w | Round shape

Code# CR12011-7690



---

### Areas of Application

- Club
- Cinema
- Gym
- Gallery
- Hotel
- Shops
- Living room, restaurant, residential interiors

---

### Product Features

- High luminous efficacy, high CRI
- Energy savings of up to 90% compared to halogen lamp spotlights
- CCT optional and dimmable
- Aluminum housing, height is customized from 150mm-1000mm
- Uniform light output and good consistency
- Flicker free
- Easy and quick installation

---

## Complete Product Data

<b>Code#</b>	CR12011-7690
<b>Wattage</b>	7w
<b>Installation Type</b>	Suspended
<b>Dimension</b>	φ76*H900mm
<b>Cutout</b>	/
<b>IP Rating</b>	IP20
<b>Luminous Flux</b>	490lm
<b>Beam Angle</b>	15°, 24°, 36°
<b>Working Temperature</b>	-25°C ~55°C
<b>Certificates</b>	/
<b>Warranty</b>	3 Years
<b>Packing Size</b>	/

## Driver Data

<b>Driver Brand</b>	Tridonic, Osram, Philips, Lifud, Euchips, Eaglerise, etc.
<b>Input Voltage</b>	100-250VAC 50/60hz
<b>Output Voltage</b>	30-42Vdc
<b>Output Current</b>	250mA
<b>Power Factor</b>	>0.5 as standard; >0.9 optional
<b>Efficiently</b>	87% @230v
<b>IP Rating</b>	IP20
<b>Dimmable</b>	Non-Dimmable/Triac/0-10v/Dali Optional
<b>Free Flicker</b>	Yes
<b>Certificates</b>	CE, CB, CCC, ENEC
<b>Warranty</b>	3/5 Years

## Material&Housing Data

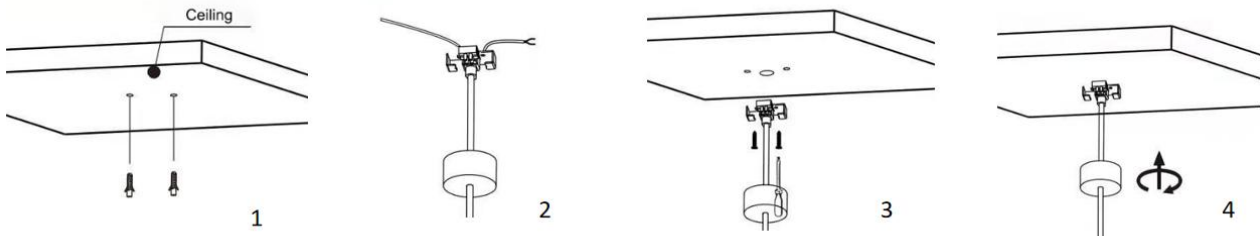
<b>Housing Color</b>	White/ Black
<b>Reflector Color</b>	White/ Black
<b>Housing Material</b>	Aluminum

## Photometric Data

<b>LED chip brand</b>	Cree/ Osram /Bridgelux/ Epistar etc.
<b>Chip Type</b>	COB
<b>Color Temperature</b>	2700K, 3000K, 4000K, 5000K, 6000K
<b>CRI</b>	>80
<b>Life time</b>	>50000Hrs
<b>Lumens efficacy</b>	100-120lm/w

---

## Dimensions&Installation



**PLEASE FIND A QUALIFIED ELECTRICIAN FOR INSTALLATION.** Please read the instructions before you install and use the downlight.

1. Make sure the power is turned off in which you are installing the products.
2. Prepare the accessories for suspended installation. (Fig 1)
3. Install a suspension wire on the lamp body(Fig 2)
3. Install the bracket on the ceiling. (Fig 3)
5. Connect the electronic cable L & N from indoor with the terminal on the lamps and connect the suspension wire to the bracket (while there is grounding wire, same methods).
6. Fix the entire base with screws, restore power at the source and the installation is complete. (Fig 4)