

PRODUCT DATASHEET

OUTDOOR LIGHTING | POLE TOP LUMINAIRES

Pole top lights | Street light | Spot light | 100W | Round shape |

Code# ST24002-100



Areas of Application

- Outdoor
- Garden
- Parking
- Garage
- Bathroom, kitchen, corridor, toilet, residential interiors

Product Features

- IP65 waterproof
- High luminous efficacy
- Die-cast aluminum housing, ensure excellent heat dissipation
- Energy savings of up to 90% compared to halogen lamp spotlights
- CCT optional
- High transmission lampshade
- Flicker free
- Easy and quick installation

Complete Product Data

Code#	ST24002-100
Wattage	100w
Installation Type	Pole top
Dimension	Φ 500*H598mm
Pole Dimension	Φ 60mm
IP Rating	IP65
Luminous Flux	12500lm
Beam Angle	/
Working Temperature	-25°C ~55°C
Certificates	/
Warranty	3 Years
Packing Size	/

Driver Data

Driver Brand	Done, Meanwell etc.
Input Voltage	100-250VAC 50/60hz
Output Voltage	/
Output Current	/
Power Factor	>0.5 as standard; >0.9 optional
Efficiently	87% @230v
IP Rating	IP65
Dimmable	Non-Dimmable/Triac/0-10v/Dali Optional
Free Flicker	Yes
Certificates	CE, CB, CCC, ENEC
Warranty	3/5 Years

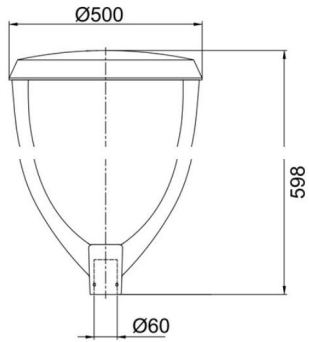
Material&Housing Data

Housing Color	RAL9005, RAL7015
Reflector Color	/
Housing Material	Die-cast Alumicnum + Tempered glass

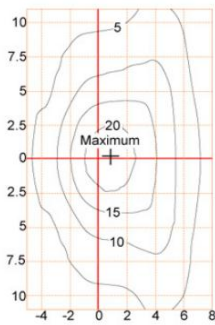
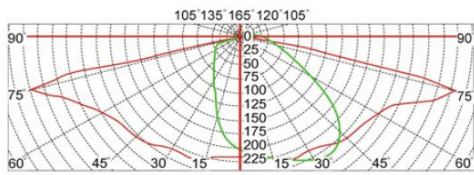
Photometric Data

LED chip brand	Cree/ Osram /Bridgelux/ Epistar etc.
Chip Type	SMD
Color Temperature	2700K, 3000K, 4000K, 6000K
CRI	>80
Life time	>50000Hrs
Lumens efficacy	100-120lm/w

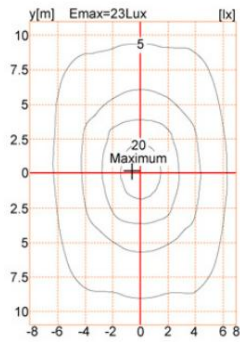
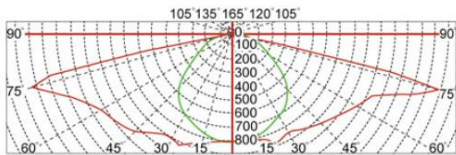
Dimensions & Polar Diagram



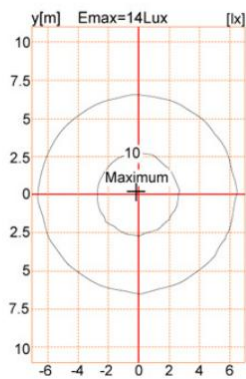
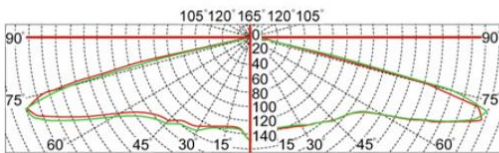
TYPE A



TYPE B



TYPE C



SHENZHEN VIVISOMA CO., LIMITED

ADD: Office3A09,4# ShenLong West Lane, Longtian Street, PingShan District, Shenzhen, China.

sales@vivisomaled.com

www.vivisomaled.com