

# PRODUCT DATASHEET

## OUTDOOR LIGHTING | POLE TOP LUMINAIRES

Pole top lights | Street light | Spot light | 80W | Round shape |

Code# ST24001-80



---

### Areas of Application

- Outdoor
- Garden
- Parking
- Garage
- Bathroom, kitchen, corridor, toilet, residential interiors

---

### Product Features

- IP65 waterproof
- High luminous efficacy
- Die-cast aluminum housing, ensure excellent heat dissipation
- Energy savings of up to 90% compared to halogen lamp spotlights
- CCT optional
- High transmission lampshade
- Flicker free
- Easy and quick installation

---

## Complete Product Data

<b>Code#</b>	ST24001-80
<b>Wattage</b>	80w
<b>Installation Type</b>	Pole top
<b>Dimension</b>	Φ 555*H602mm
<b>Cutout</b>	/
<b>IP Rating</b>	IP65
<b>Luminous Flux</b>	10000lm
<b>Beam Angle</b>	/
<b>Working Temperature</b>	-25°C ~55°C
<b>Certificates</b>	/
<b>Warranty</b>	3 Years
<b>Packing Size</b>	/

## Driver Data

<b>Driver Brand</b>	Done, Meanwell etc.
<b>Input Voltage</b>	100-250VAC 50/60hz
<b>Output Voltage</b>	/
<b>Output Current</b>	/
<b>Power Factor</b>	>0.5 as standard; >0.9 optional
<b>Efficiently</b>	87% @230v
<b>IP Rating</b>	IP65
<b>Dimmable</b>	Non-Dimmable/Triac/0-10v/Dali Optional
<b>Free Flicker</b>	Yes
<b>Certificates</b>	CE, CB, CCC, ENEC
<b>Warranty</b>	3/5 Years

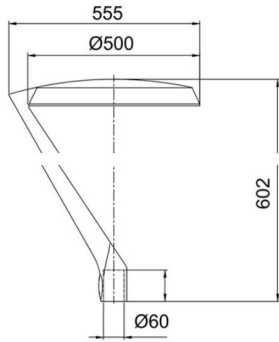
## Material&Housing Data

<b>Housing Color</b>	RAL9005, RAL7015
<b>Reflector Color</b>	/
<b>Housing Material</b>	Die-cast Alumininum + Tempered glass

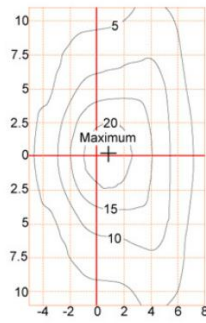
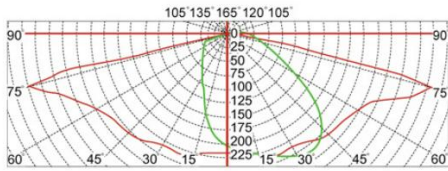
## Photometric Data

<b>LED chip brand</b>	Cree/ Osram /Bridgelux/ Epistar etc.
<b>Chip Type</b>	SMD
<b>Color Temperature</b>	2700K, 3000K, 4000K, 6000K
<b>CRI</b>	>80
<b>Life time</b>	>50000Hrs
<b>Lumens efficacy</b>	100-120lm/w

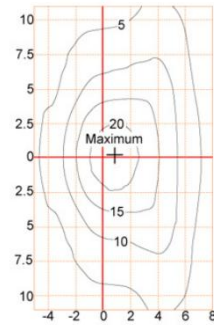
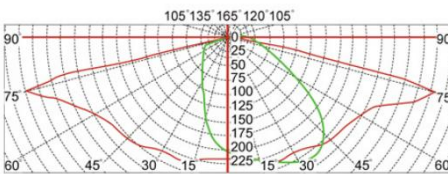
## Dimensions & Polar Diagram



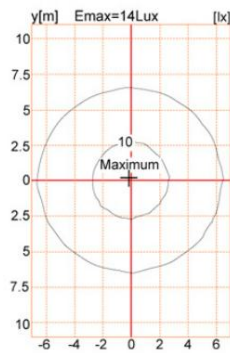
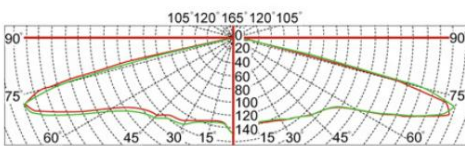
### TYPE A



### TYPE B



### TYPE C



SHENZHEN VIVISOMA CO.,LIMITED

ADD: Office3A09,4# ShenLong West Lane, Longtian Street, PingShan District, Shenzhen, China.

sales@vivisomaled.com

www.vivisomaled.com