

PRODUCT DATASHEET

OUTDOOR LIGHTING | POLE TOP LUMINAIRES

Pole top lights | Street light | Spot light | 40W | Round shape |

Code# ST24001-40



Areas of Application

- Outdoor
- Garden
- Parking
- Garage
- Bathroom, kitchen, corridor, toilet, residential interiors

Product Features

- IP65 waterproof
- High luminous efficacy
- Die-cast aluminum housing, ensure excellent heat dissipation
- Energy savings of up to 90% compared to halogen lamp spotlights
- CCT optional
- High transmission lampshade
- Flicker free
- Easy and quick installation

Complete Product Data

| | |
|----------------------------|--------------|
| Code# | ST24001-40 |
| Wattage | 40w |
| Installation Type | Pole top |
| Dimension | Φ 555*H602mm |
| Cutout | / |
| IP Rating | IP65 |
| Luminous Flux | 5000lm |
| Beam Angle | / |
| Working Temperature | -25°C ~55°C |
| Certificates | / |
| Warranty | 3 Years |
| Packing Size | / |

Driver Data

| | |
|-----------------------|--|
| Driver Brand | Done, Meanwell etc. |
| Input Voltage | 100-250VAC 50/60hz |
| Output Voltage | / |
| Output Current | / |
| Power Factor | >0.5 as standard; >0.9 optional |
| Efficiently | 87% @230v |
| IP Rating | IP65 |
| Dimmable | Non-Dimmable/Triac/0-10v/Dali Optional |
| Free Flicker | Yes |
| Certificates | CE, CB, CCC, ENEC |
| Warranty | 3/5 Years |

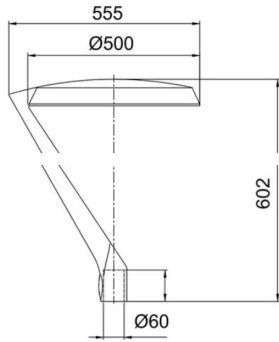
Material&Housing Data

| | |
|-------------------------|--------------------------------------|
| Housing Color | RAL9005, RAL7015 |
| Reflector Color | / |
| Housing Material | Die-cast Alumininum + Tempered glass |

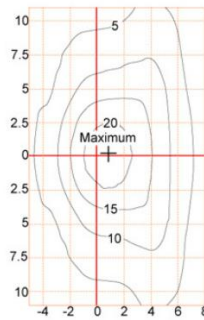
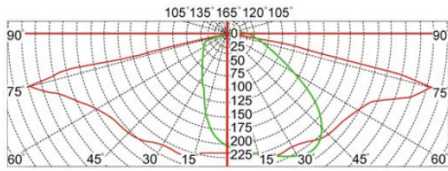
Photometric Data

| | |
|--------------------------|--------------------------------------|
| LED chip brand | Cree/ Osram /Bridgelux/ Epistar etc. |
| Chip Type | SMD |
| Color Temperature | 2700K, 3000K, 4000K, 6000K |
| CRI | >80 |
| Life time | >50000Hrs |
| Lumens efficacy | 100-120lm/w |

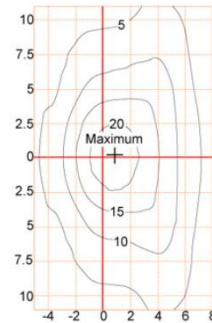
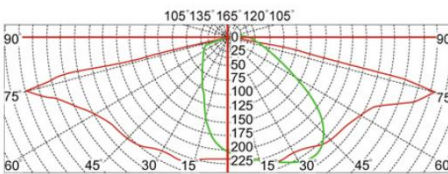
Dimensions & Polar Diagram



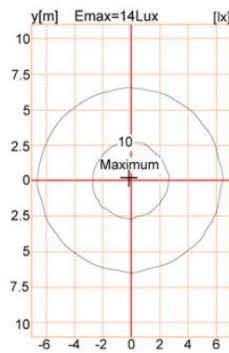
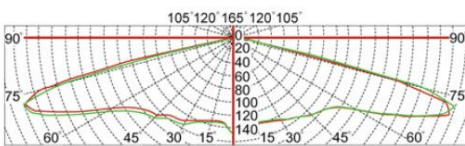
TYPE A



TYPE B



TYPE C



SHENZHEN VIVISOMA CO.,LIMITED

ADD: Office3A09,4# ShenLong West Lane, Longtian Street, PingShan District, Shenzhen, China.

sales@vivisomaled.com

www.vivisomaled.com