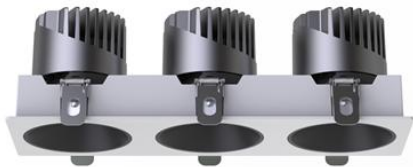


PRODUCT DATASHEET

DOWNLIGHTS | SPOTLIGHTS-SQUARE

Downlights | Recessed mounted spotlight | 60w | Square shape

Code# SS05014-3x20



Areas of Application

- Shops
- Office
- Villa
- Exhibition hall
- Corridors, stairways, entrance areas
- Galleries, museums, residential interiors

Product Features

- High luminous efficacy, high CRI
- Uniform light output and good consistency
- Deep anti-glare designs of reflectors, without flicker
- Energy savings of up to 90% compared to halogen lamp spotlights
- Die-cast aluminum housing, ensure excellent heat dissipation
- CCT optional and dimmable
- Easy and quick installation
- The irradiation angel is adjustable

Complete Product Data

Code#	SS05014-3x20
Wattage	60w
Installation Type	Recessed
Dimension	255mm*85mm*100mm
Cutout	250mm*75mm
IP Rating	IP20
Luminous Flux	4800lm
Beam Angle	15°, 24°, 38°
Working Temperature	-25°C ~55°C
Certificates	/
Warranty	3 Years
Packing Size	/

Driver Data

Driver Brand	Tridonic, Osram, Philips, Lifud, Euchips, Eaglerise, etc.
Input Voltage	100-250VAC 50/60hz
Output Voltage	27-42Vdc
Output Current	500mA
Power Factor	>0.5 as standard; >0.9 optional
Efficiently	87% @230v
IP Rating	IP20
Dimmable	Non-Dimmable/Triac/0-10v/Dali Optional
Free Flicker	Yes
Certificates	CE, CB, CCC, ENEC
Warranty	3/5 Years

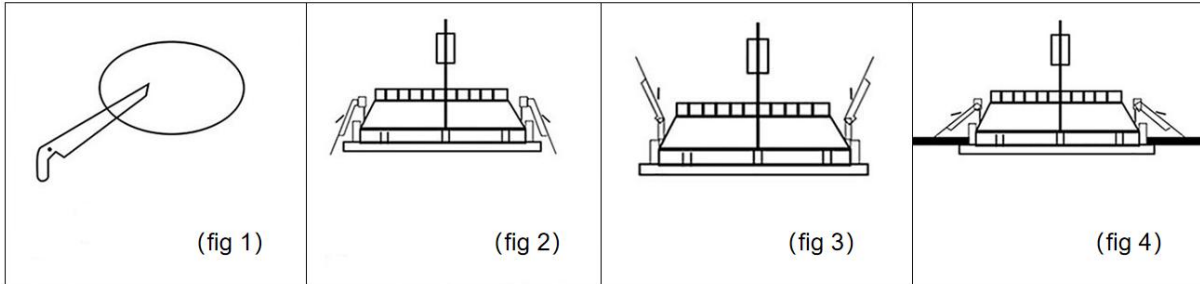
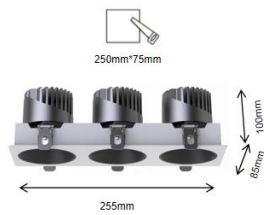
Material&Housing Data

Housing Color	White/ Black
Reflector Color	Matt white/ Matte black/ Matt silver/ Glossy Black/ Glossy Silver/ Champagne gold/ Rose golden
Housing Material	Die-casting Aluminum

Photometric Data

LED chip brand	Cree/ Osram /Bridgelux/ Epistar etc.
Chip Type	COB
Color Temperature	2700K, 3000K, 4000K, 5000K, 6000K
CRI	>80, >90
Life time	>50000Hrs
Lumens efficacy	100-120lm/w

Dimensions&Installation



PLEASE FIND A QUALIFIED ELECTRICIAN FOR INSTALLATION. Please read the instructions before you install and use the downlight.

1. Make sure the power is turned off in which you are installing the products.
2. Measure the ceiling opening to make sure the edge of the downlight will cover the entire hole and still sit firmly in the ceiling before proceeding. (Fig 1)
3. Connect the wires to the wiring terminals of the lighting fixtures. (Fig 2)
4. Squeeze the two housing clips so they are in an upright position and insert lamp into housing. (Fig 3)
5. Once lamp is inside the housing, release the housing clips and continue pushing lamp into housing until securely fixed and flush with ceiling. (Fig 4)
6. Restore power at the source and the installation is complete.