

PRODUCT DATASHEET

DOWNLIGHTS | SPOTLIGHTS-IP RATED

Downlights | Surface mounted spotlight | 80w | Round shape
Code# WPC05005-100



Areas of Application

- Courtyard
- Garden
- Villa
- Balcony
- Bathroom, kitchen, residential interiors

Product Features

- IP65 waterproof
- Uniform light output and good consistency
- High luminous efficacy, high CRI
- Triple anti-glare, without flicker
- Energy savings of up to 90% compared to halogen lamp spotlights
- Die-cast aluminum housing, ensure excellent heat dissipation
- CCT optional and dimmable
- Easy and quick installation

Complete Product Data

Code#	WPC05005-100
Wattage	100w
Installation Type	Surface
Dimension	φ205mm*H212mm
Cutout	/
IP Rating	IP65
Luminous Flux	8000lm
Beam Angle	15°, 24°, 38°, 60°
Working Temperature	-25°C ~55°C
Certificates	/
Warranty	3 Years
Packing Size	/

Driver Data

Driver Brand	Tridonic, Osram, Philips, Lifud, Euchips, Eaglerise, etc.
Input Voltage	100-250VAC 50/60hz
Output Voltage	24Vdc
Output Current	0~4500mA
Power Factor	>0.5 as standard; >0.9 optional
Efficiently	87% @230v
IP Rating	IP20
Dimmable	Non-Dimmable/Triac/0-10v/Dali Optional
Free Flicker	Yes
Certificates	CE, CB, CCC, ENEC
Warranty	3/5 Years

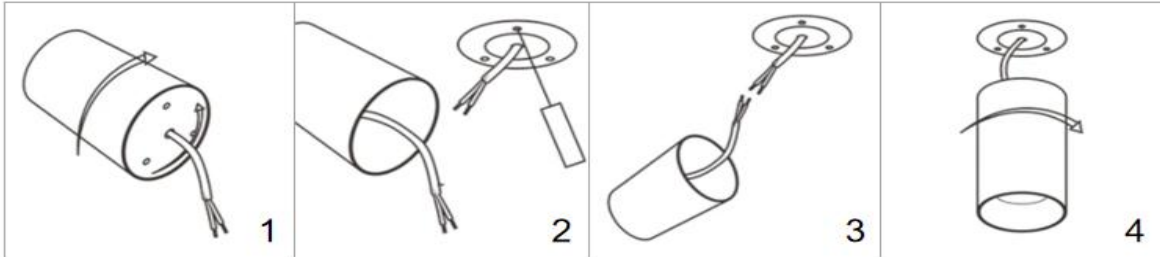
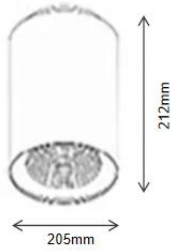
Material&Housing Data

Housing Color	White/ Black
Reflector Color	White/ Black/ Golden/ Silver/ Nickel
Housing Material	Die-casting Aluminum

Photometric Data

LED chip brand	Cree/ Osram /Bridgelux/ Epistar etc.
Chip Type	COB
Color Temperature	2700K, 3000K, 4000K, 5000K, 6000K
CRI	>80, >90
Life time	>50000Hrs
Lumens efficacy	100-120lm/w

Dimensions&Installation



PLEASE FIND A QUALIFIED ELECTRICIAN FOR INSTALLATION. Please read the instructions before you install and use the downlight.

1. Make sure the power is turned off in which you are installing the products.
2. Rotate the lamp body clockwise, rotate the base to separate from the lamp body anticlockwise. (Fig 1)
3. Fix the base with the screwdriver. (Fig 2)
4. Connect the input terminal to the main power supply. (Fig 3)
5. Rotate the housing base with the pedestal anticlockwise for fixation. (Fig 4)
6. Restore power at the source and the installation is complete.