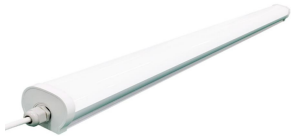


PRODUCT DATASHEET

LINEAR LIGHTS | DAMP-PROOF LUMINAIRES

Linear light | Surface mounted linear light 40w | Square shape

Code# DPR14006-40



Areas of Application

- Hospital
- Shops
- Office
- Warehouse
- Factory, Garage, laboratory, commercial building

Product Features

- Full PC material design
- IP65, moisture-proof, dust-proof, insect-proof
- High luminous efficacy, high CRI
- Energy savings of up to 90% compared to halogen lamp spotlights
- CCT optional and dimmable
- Uniform light output and good consistency
- Anti-glare, without flicker
- Easy and quick installation

Complete Product Data

Code#	DPR14006-40
Wattage	40w
Installation Type	Surface
Dimension	1200mm*80mm*75mm
Cutout	/
IP Rating	IP65
Luminous Flux	4000lm
Beam Angle	120°
Working Temperature	-25°C ~55°C
Certificates	/
Warranty	3 Years
Packing Size	/

Driver Data

Driver Brand	Tridonic, Osram, Philips, Lifud, Euchips, Eaglerise, etc.
Input Voltage	100-250VAC 50/60hz
Output Voltage	24-40Vdc
Output Current	1000mA
Power Factor	>0.5 as standard; >0.9 optional
Efficiently	87% @230v
IP Rating	IP20
Dimmable	Non-Dimmable/Triac/0-10v/Dali Optional
Free Flicker	Yes
Certificates	CE, CB, CCC, ENEC
Warranty	3/5 Years

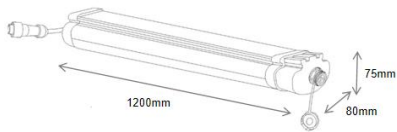
Material&Housing Data

Housing Color	White
Reflector Color	/
Housing Material	PC

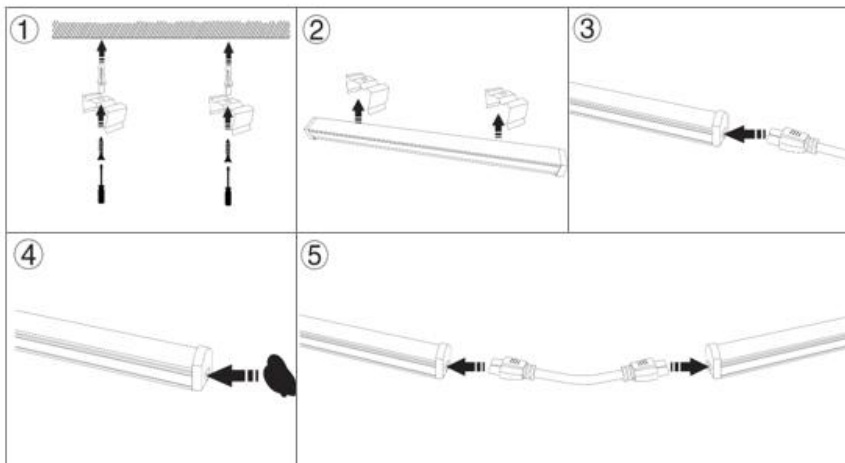
Photometric Data

LED chip brand	Cree/ Osram /Bridgelux/ Epistar etc.
Chip Type	SMD
Color Temperature	3000K, 4000K, 6000K
CRI	>80
Life time	>50000Hrs
Lumens efficacy	100-120lm/w

Dimensions&Installation



PLEASE FIND A QUALIFIED ELECTRICIAN FOR INSTALLATION. Please read the instructions before you install and use the linear light.



3. Install the fitting into the metal clips. (Fig 2)
4. Connect the one side of the cable to power supply and another side connect to the fitting. (Fig 3)
5. Install the plastic end cap to another side of fitting. (Fig 4)
6. Linkable option, please connect two fittings with the interconnector. (Fig 5)
7. Restore power at the source and the installation is complete.