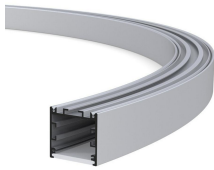


PRODUCT DATASHEET

LINEAR LIGHT | CURVED LINEAR

Linear light | Suspended & Surface mounted linear light 20w/m | S shape

Code# CL103535



Areas of Application

- Gym
- Library
- Office
- Club
- Shops
- Corridors, stairways, entrance areas
- Living room, restaurant, residential interiors

Product Features

- CNC bending, customizable size
- The lights can be spliced without any traces of splicing
- High luminous efficacy, high CRI
- Energy savings of up to 90% compared to halogen lamp spotlights
- CCT optional and dimmable
- Die-cast aluminum housing, ensure excellent heat dissipation
- Uniform light output and good consistency
- Anti-Glare, without flicker
- Easy and quick installation

Complete Product Data

Code#	CL103535
Wattage	20w/m
Installation Type	Suspended/Surface
Dimension	W35mm*H35mm
CUT OUT	/
Min. Radius	R300mm
IP Rating	IP20
Luminous Flux	1000lm
Beam Angle	/
Working Temperature	-25°C ~55°C
Certificates	/
Warranty	3 Years
Packing Size	/

Driver Data

Driver Brand	Tridonic, Osram, Philips, Lifud, Euchips, Eaglerise, etc.
Input Voltage	100-250VAC 50/60hz
Output Voltage	27-42Vdc
Output Current	500mA
Power Factor	>0.5 as standard; >0.9 optional
Efficiently	87% @230v
IP Rating	IP20
Dimmable	Non-Dimmable/Triac/0-10v/Dali Optional
Free Flicker	Yes
Certificates	CE, CB, CCC, ENEC
Warranty	3/5 Years

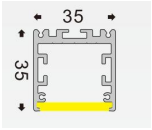
Material&Housing Data

Housing Color	White/ Black
Housing Material	Aluminum + silicon diffuser

Photometric Data

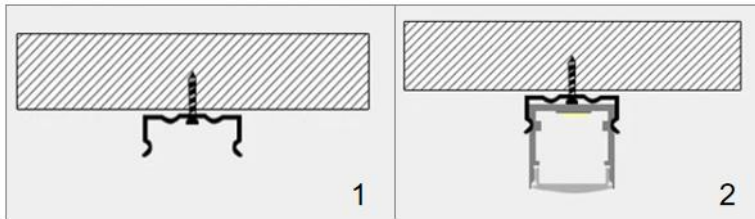
LED chip brand	Cree/ Osram /Bridgelux/ Epistar etc.
Chip Type	SMD
Color Temperature	2700K, 3000K, 4000K, 5000K, 6000K
CRI	>80, >90
Life time	>50000Hrs
Lumens efficacy	100-120lm/w

Dimensions&Installation



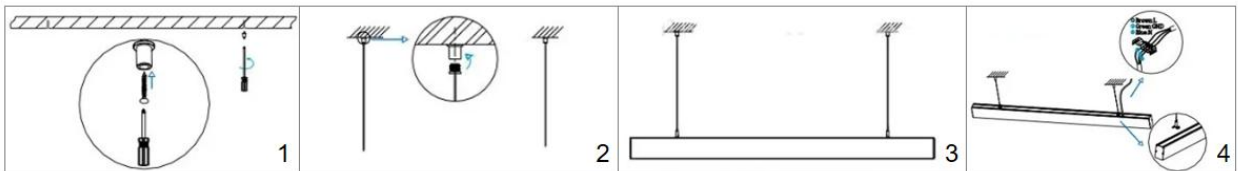
PLEASE FIND A QUALIFIED ELECTRICIAN FOR INSTALLATION. Please read the instructions before you install and use the linear light, make sure the power is turned off in which you are installing the products.

Method A: Surface Mounted



1. Fix the clips with screws on the surface. (Fig 1)
2. Put the profiles in the fixed clips. (Fig 2)
3. Connect the input terminal to the power supply.
4. Restore power at the source and the installation is complete.

Method B: Suspended Mounted



1. Fix the accessories on the ceiling and install the clip. (Fig 1)
2. Adjust the length of the line according to actual needs. (Fig 3)
3. Adjust the length of the line according to actual needs. (Fig 3)
4. Connect the input terminal to the power supply. (Fig 4)
5. Restore power at the source and the installation is complete.