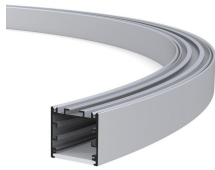


# PRODUCT DATASHEET

## LINEAR LIGHT | CURVED LINEAR

Linear light | Suspended & Surface mounted linear light 10w/m | S shape

Code# CL101515



---

### Areas of Application

- Gym
- Library
- Office
- Club
- Shops
- Corridors, stairways, entrance areas
- Living room, restaurant, residential interiors

---

### Product Features

- CNC bending, customizable size
- The lights can be spliced without any traces of splicing
- High luminous efficacy, high CRI
- Energy savings of up to 90% compared to halogen lamp spotlights
- CCT optional and dimmable
- Die-cast aluminum housing, ensure excellent heat dissipation
- Uniform light output and good consistency
- Anti-Glare, without flicker
- Easy and quick installation

---

## Complete Product Data

<b>Code#</b>	CL101515
<b>Wattage</b>	10w/m
<b>Installation Type</b>	Suspended/Surface
<b>Dimension</b>	W15mm*H15mm
<b>CUT OUT</b>	/
<b>MIN. RADIUS</b>	R200mm
<b>IP Rating</b>	IP20
<b>Luminous Flux</b>	500lm
<b>Beam Angle</b>	/
<b>Working Temperature</b>	-25°C ~55°C
<b>Certificates</b>	/
<b>Warranty</b>	3 Years
<b>Packing Size</b>	/

## Driver Data

<b>Driver Brand</b>	Tridonic, Osram, Philips, Lifud, Euchips, Eaglerise, etc.
<b>Input Voltage</b>	100-250VAC 50/60hz
<b>Output Voltage</b>	30-42Vdc
<b>Output Current</b>	250mA
<b>Power Factor</b>	>0.5 as standard; >0.9 optional
<b>Efficiently</b>	87% @230v
<b>IP Rating</b>	IP20
<b>Dimmable</b>	Non-Dimmable/Triac/0-10v/Dali Optional
<b>Free Flicker</b>	Yes
<b>Certificates</b>	CE, CB, CCC, ENEC
<b>Warranty</b>	3/5 Years

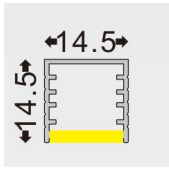
## Material&Housing Data

<b>Housing Color</b>	White/Black
<b>Housing Material</b>	Aluminum + silicon diffuser

## Photometric Data

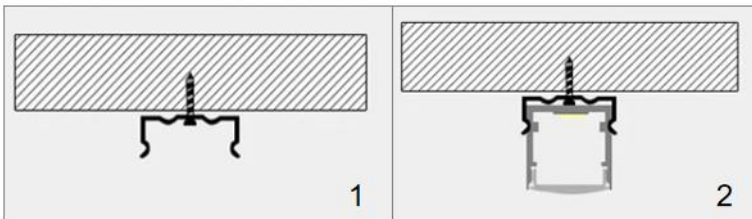
<b>LED chip brand</b>	Cree/ Osram /Bridgelux/ Epistar etc.
<b>Chip Type</b>	SMD
<b>Color Temperature</b>	2700K, 3000K, 4000K, 5000K, 6000K
<b>CRI</b>	>80, >90
<b>Life time</b>	>50000Hrs
<b>Lumens efficacy</b>	100-120lm/w

## Dimensions&Installation



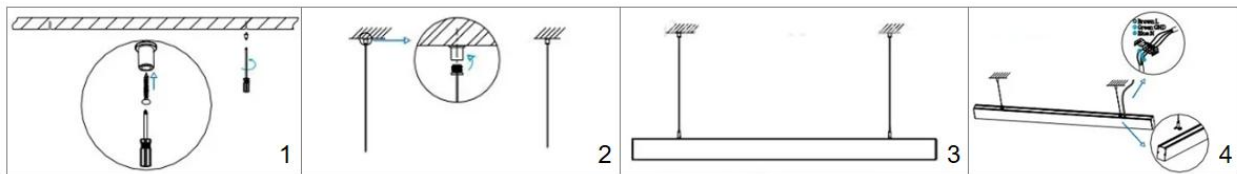
**PLEASE FIND A QUALIFIED ELECTRICIAN FOR INSTALLATION.** Please read the instructions before you install and use the linear light, make sure the power is turned off in which you are installing the products.

### Method A: Surface Mounted



1. Fix the clips with screws on the surface. (Fig 1)
2. Put the profiles in the fixed clips. (Fig 2)
3. Connect the input terminal to the power supply.
4. Restore power at the source and the installation is complete.

### Method B: Suspended Mounted



1. Drill holes in the right place on the ceiling. (Fig 1)
2. Fix the accessories on the ceiling and install the sling. (Fig 2)
3. Adjust the length of the line according to actual needs. (Fig 3)
4. Connect the input terminal to the power supply. (Fig 4)
5. Restore power at the source and the installation is complete.