

# PRODUCT DATASHEET

## LINEAR LIGHT | PENDANT LINEAR

Linear light |Pendant mounted linear light 40w|Square shape  
Code# LP043380C-120



---

### Areas of Application

- Gym
- Library
- Office
- Club
- Shops
- Living room, restaurant, residential interiors

---

### Product Features

- High luminous efficacy, high CRI
- Energy savings of up to 90% compared to halogen lamp spotlights
- CCT optional and dimmable
- Die-cast aluminum housing, ensure excellent heat dissipation
- Uniform light output and good consistency
- Anti-Glare, without flicker
- Easy and quick installation

---

## Complete Product Data

<b>Code#</b>	LP043380C-120
<b>Wattage</b>	40w
<b>Installation Type</b>	Suspended
<b>Dimension</b>	L1200mm*W33mm*H80mm
<b>Cutout</b>	/
<b>IP Rating</b>	IP20
<b>Luminous Flux</b>	3200lm
<b>Beam Angle</b>	15°, 30°, 45°
<b>Working Temperature</b>	-25°C ~55°C
<b>Certificates</b>	/
<b>Warranty</b>	3 Years
<b>Packing Size</b>	/

## Driver Data

<b>Driver Brand</b>	Tridonic, Osram, Philips, Lifud, Euchips, Eaglerise, etc.
<b>Input Voltage</b>	100-250VAC 50/60hz
<b>Output Voltage</b>	24-40Vdc
<b>Output Current</b>	1000mA
<b>Power Factor</b>	>0.5 as standard; >0.9 optional
<b>Efficiently</b>	87% @230v
<b>IP Rating</b>	IP20
<b>Dimmable</b>	Non-Dimmable/Triac/0-10v/Dali Optional
<b>Free Flicker</b>	Yes
<b>Certificates</b>	CE, CB, CCC, ENEC
<b>Warranty</b>	3/5 Years

## Material&Housing Data

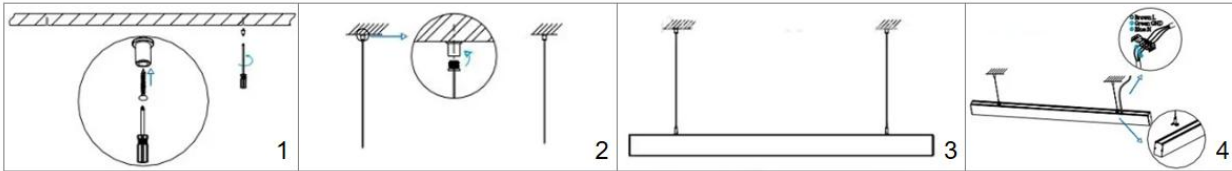
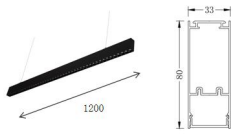
<b>Housing Color</b>	White/ Black
<b>Reflector Color</b>	White/ Black
<b>Housing Material</b>	Aluminum

## Photometric Data

<b>LED chip brand</b>	Cree/ Osram /Bridgelux/ Epistar etc.
<b>Chip Type</b>	SMD
<b>Color Temperature</b>	2700K, 3000K, 4000K, 5000K, 6000K
<b>CRI</b>	>82
<b>Life time</b>	>50000Hrs
<b>Lumens efficacy</b>	100-120lm/w

---

## Dimensions&Installation



**PLEASE FIND A QUALIFIED ELECTRICIAN FOR INSTALLATION.** Please read the instructions before you install and use the downlight.

1. Make sure the power is turned off in which you are installing the products.
2. Drill holes in the right place on the ceiling. (Fig 1)
3. Fix the accessories on the ceiling and install the sling. (Fig 2)
4. Adjust the length of the line according to actual needs. (Fig 3)
5. Connect the power cord through the junction box. (Fig 4)
6. Restore power at the source and the installation is complete.