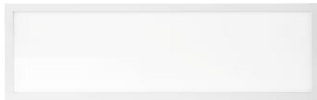


PRODUCT DATASHEET

DOWNLIGHTS | PANEL LIGHTS

Downlights | Recessed mounted panel light 72w | Square shape

Code# PN0860120H



Areas of Application

- Office
- Shops
- Hotel
- Gym
- Corridors, stairways, entrance areas
- Kitchen, dining room residential interiors

Product Features

- High luminous efficacy, high CRI
- Energy savings of up to 90% compared to halogen lamp spotlights
- CCT optional and dimmable
- Die-cast aluminum housing, ensure excellent heat dissipation
- Uniform light output and good consistency, without flicker
- Easy and quick installation

Complete Product Data

Code#	PN0860120H
Wattage	72w
Installation Type	Suspended/Recessed/Surface
Dimension	595mm*1195mm
Cutout	/
IP Rating	IP20
Luminous Flux	7200lm
Beam Angle	/
Working Temperature	-25°C ~55°C
Certificates	/
Warranty	3 Years
Packing Size	/

Driver Data

Driver Brand	Tridonic, Osram, Philips, Lifud, Euchips, Eaglerise, etc.
Input Voltage	100-250VAC 50/60hz
Output Voltage	9-42Vdc
Output Current	1800mA
Power Factor	>0.5 as standard; >0.9 optional
Efficiently	87% @230v
IP Rating	IP20
Dimmable	Non-Dimmable/Triac/0-10v/Dali Optional
Free Flicker	Yes
Certificates	CE, CB, CCC, ENEC
Warranty	3/5 Years

Material&Housing Data

Housing Color	White
Reflector Color	/
Housing Material	Aluminum+Acrylic

Photometric Data

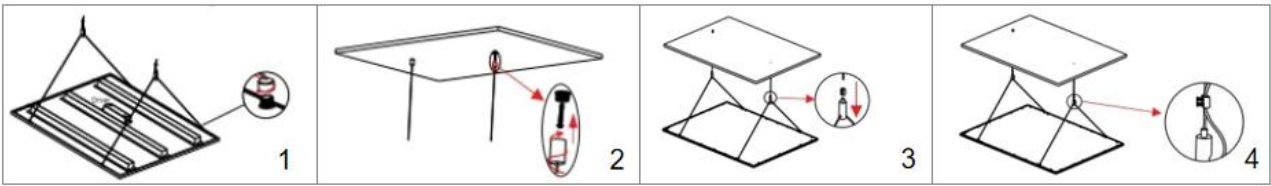
LED chip brand	Cree/ Osram /Bridgelux/ Epistar etc.
Chip Type	SMD
Color Temperature	3000K, 4000K, 5000K, 6000K
CRI	>80
Life time	>50000Hrs
Lumens efficacy	100-120lm/w

Dimensions&Installation



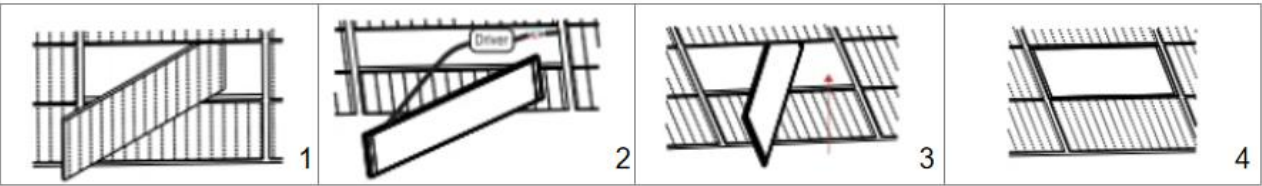
PLEASE FIND A QUALIFIED ELECTRICIAN FOR INSTALLATION. Please read the instructions before you install and use the downlight.

Method A: Suspended



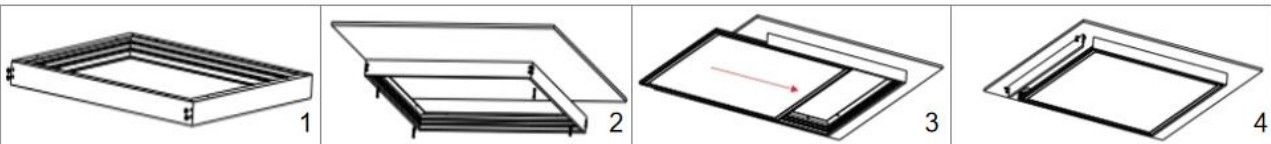
1. Fix the wire cable to the back of the panel. (Fig 1)
2. Fix the bases on the ceiling according to the drawing and install the cables into the base (Fig 2)
3. Pass the cable through the lock and adjuster; adjust the length and lock the cable. (Fig 3)
4. Finally screw in the locker tightly. (Fig 4)

Method B: Recessed



1. Take out the ceiling. (Fig 1)
2. Connect the driver. (Fig 2)
3. Place the panel into the ceiling. (Fig 3)
4. Set the panel downwards. (Fig 4)

Method C: Surface



1. Connect 4pcs of aluminum bars by using the screws. (Fig 1)
2. Fix the frames into the ceiling. (Fig 2)
3. Remove 1pc of the aluminum bar to place the panel in. (Fig 3)
4. Place again the aluminum bar to finish the installation. (Fig 4)