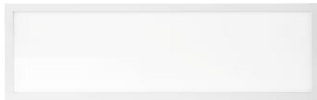


# PRODUCT DATASHEET

## DOWNLIGHTS | PANEL LIGHTS

Downlights | Recessed mounted panel light 62w | Square shape

Code# PN0860120



---

### Areas of Application

- Office
- Shops
- Hotel
- Gym
- Corridors, stairways, entrance areas
- Kitchen, dining room residential interiors

---

### Product Features

- High luminous efficacy, high CRI
- Energy savings of up to 90% compared to halogen lamp spotlights
- CCT optional and dimmable
- Die-cast aluminum housing, ensure excellent heat dissipation
- Uniform light output and good consistency, without flicker
- Easy and quick installation

---

## Complete Product Data

<b>Code#</b>	PN0860120
<b>Wattage</b>	62w
<b>Installation Type</b>	Suspended/Recessed/Surface
<b>Dimension</b>	595mm*1195mm
<b>Cutout</b>	/
<b>IP Rating</b>	IP20
<b>Luminous Flux</b>	6200lm
<b>Beam Angle</b>	/
<b>Working Temperature</b>	-25°C ~55°C
<b>Certificates</b>	/
<b>Warranty</b>	3 Years
<b>Packing Size</b>	/

## Driver Data

<b>Driver Brand</b>	Tridonic, Osram, Philips, Lifud, Euchips, Eaglerise, etc.
<b>Input Voltage</b>	100-250VAC 50/60hz
<b>Output Voltage</b>	24-36Vdc
<b>Output Current</b>	1700mA
<b>Power Factor</b>	>0.5 as standard; >0.9 optional
<b>Efficiently</b>	87% @230v
<b>IP Rating</b>	IP20
<b>Dimmable</b>	Non-Dimmable/Triac/0-10v/Dali Optional
<b>Free Flicker</b>	Yes
<b>Certificates</b>	CE, CB, CCC, ENEC
<b>Warranty</b>	3/5 Years

## Material&Housing Data

<b>Housing Color</b>	White
<b>Reflector Color</b>	/
<b>Housing Material</b>	Aluminum+Acrylic

## Photometric Data

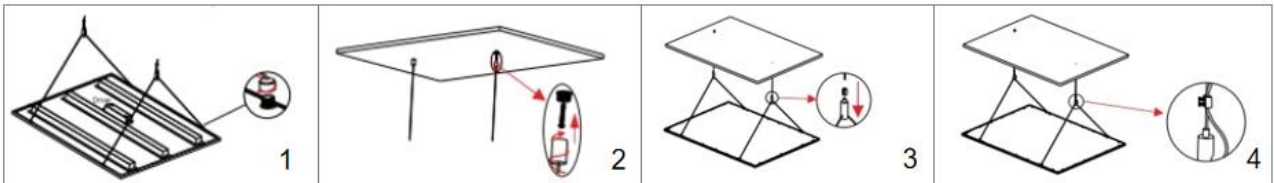
<b>LED chip brand</b>	Cree/ Osram /Bridgelux/ Epistar etc.
<b>Chip Type</b>	SMD
<b>Color Temperature</b>	3000K, 4000K, 5000K, 6000K
<b>CRI</b>	>80
<b>Life time</b>	>50000Hrs
<b>Lumens efficacy</b>	100-120lm/w

## Dimensions&Installation



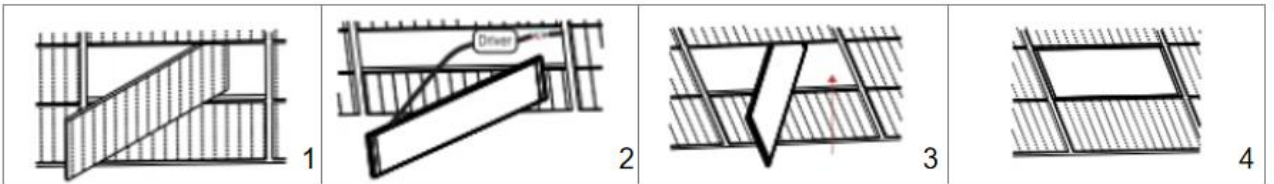
**PLEASE FIND A QUALIFIED ELECTRICIAN FOR INSTALLATION.** Please read the instructions before you install and use the downlight.

### Method A: Suspended



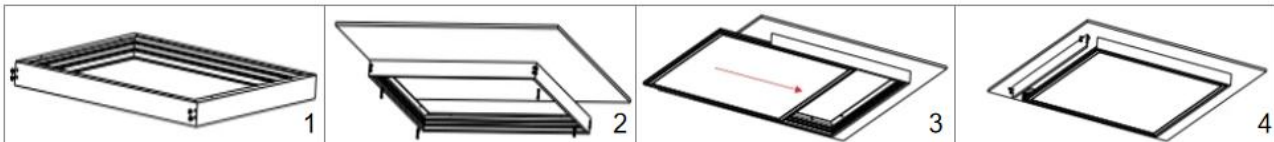
1. Fix the wire cable to the back of the panel. (Fig 1)
2. Fix the bases on the ceiling according to the drawing and install the cables into the base (Fig 2)
3. Pass the cable through the lock and adjuster; adjust the length and lock the cable. (Fig 3)
4. Finally screw in the locker tightly. (Fig 4)

### Method B: Recessed



1. Take out the ceiling. (Fig 1)
2. Connect the driver. (Fig 2)
3. Place the panel into the ceiling. (Fig 3)
4. Set the panel downwards. (Fig 4)

### Method C: Surface



1. Connect 4pcs of aluminum bars by using the screws. (Fig 1)
2. Fix the frames into the ceiling. (Fig 2)
3. Remove 1pc of the aluminum bar to place the panel in. (Fig 3)
4. Place again the aluminum bar to finish the installation. (Fig 4)