

PRODUCT DATASHEET

DOWNLIGHTS | SPOTLIGHTS-PAINTABLE PLASTER LIGHT

Downlights | Recessed mounted spotlight | 3w | Square shape

Code# GW07024



Areas of Application

- Shops
- Villa
- Hotel
- Club
- Corridors, stairways, entrance areas
- Galleries, museums residential interiors

Product Features

- Module structure, separate embedded installation, adapted to different LED light source and beam angles
- The height of the embedded parts can be adjusted
- Energy savings of up to 90% compared to halogen lamp spotlights
- High luminous efficacy, high CRI
- CCT optional and dimmable
- Uniform light output and good consistency
- Without flicker, anti glare

Complete Product Data

Code#	GW07024
Wattage	3w
Installation Type	Recessed
Dimension	L165mm*W80mm*H48mm
Cutout	172mm*85mm
IP Rating	IP20
Luminous Flux	240lm
Beam Angle	15°, 24°
Working Temperature	-25°C ~55°C
Certificates	/
Warranty	3 Years
Packing Size	/

Driver Data

Driver Brand	Tridonic, Osram, Philips, Lifud, Euchips, Eaglerise, etc.
Input Voltage	100-250VAC 50/60hz
Output Voltage	10-24Vdc
Output Current	250mA
Power Factor	>0.5 as standard; >0.9 optional
Efficiently	87% @230v
IP Rating	IP20
Dimmable	Non-Dimmable/Triac/0-10v/Dali Optional
Free Flicker	Yes
Certificates	CE, CB, CCC, ENEC
Warranty	3/5 Years

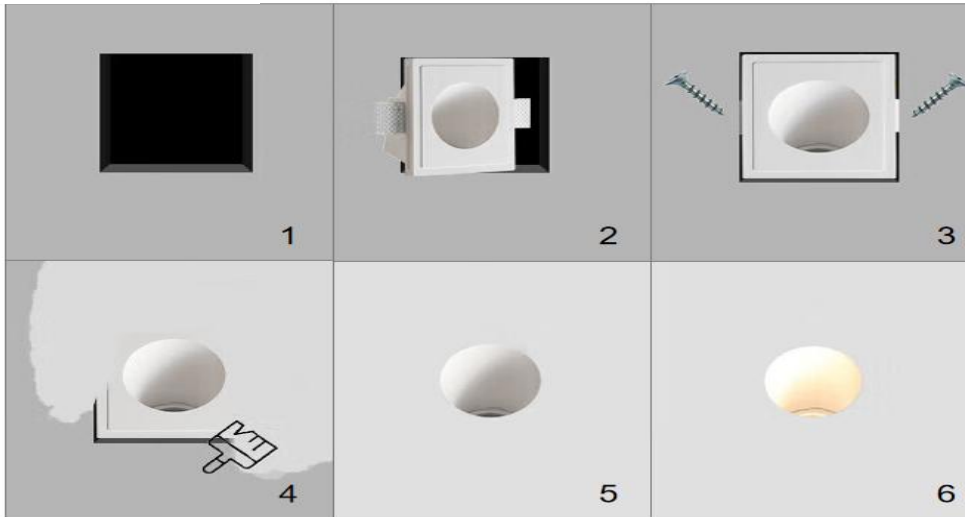
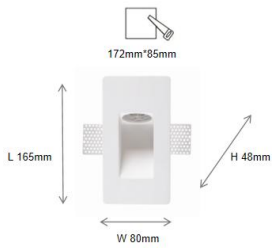
Material&Housing Data

Housing Color	White
Reflector Color	White
Housing Material	Gypsum

Photometric Data

LED chip brand	Cree/ Osram /Bridgelux/ Epistar etc.
Chip Type	COB
Color Temperature	2700K, 3000K, 4000K, 5000K, 6000K
CRI	>80, >90
Life time	>50000Hrs
Lumens efficacy	100-120lm/w

Dimensions&Installation



PLEASE FIND A QUALIFIED ELECTRICIAN FOR INSTALLATION. Please read the instructions before you install and use the downlight.

1. Make sure the power is turned off in which you are installing the products.
2. Open the hole in the wall according to the lamp size. (Fig 1)
3. Put the embedded parts of lamps into back side, pay attention to pull the wire out. (Fig 2)
4. The self-tapping screw goes through the wall and locks the embedded wings of the lamp. (Fig 3)
5. The edge of embedded parts is gray until the edge smooth with wall. (Fig 4)
6. Light source module of lamps and lanterns, after being connected to the mains supply push the module into the embedded part. (Fig 5)
7. Install the fixed card, and the installation is complete electric test light. (Fig 6)