

PRODUCT DATASHEET

DOWNLIGHTS | SPOTLIGHTS-TRIMLESS

Downlights | Recessed mounted spotlight | 8w | Round shape | Honeycomb available
Code# TR05002-8



Areas of Application

- Shops
- Hotel
- Club
- Corridors, stairways, entrance areas
- Galleries, museums residential interiors

Product Features

- Module structure, separate embedded installation, adapted to different LED light source and beam angles
- The design of safety ropes effectively prevents accidental falls of spotlights
- Different colors and anti-glare designs of reflectors for choice, realizing spot, flood or wallwasher lighting effect
- Lamp can be adjusted the irradiation direction for precise lighting
- Energy savings of up to 90 % compared to halogen lamp spotlights
- High luminous efficacy, high CRI
- CCT optional and dimmable
- Die-cast aluminum housing, ensure excellent heat dissipation
- Uniform light output and good consistency, without flicker

Complete Product Data

Code#	TR05002-8
Wattage	8w
Installation Type	Recessed
Dimension	φ100mm*H76mm
Cutout	φ75mm
IP Rating	IP20
Luminous Flux	640lm
Beam Angle	15°, 24°, 38°
Working Temperature	-25°C ~55°C
Certificates	/
Warranty	3 Years
Packing Size	/

Driver Data

Driver Brand	Tridonic, Osram, Philips, Lifud, Euchips, Eaglerise, etc.
Input Voltage	100-250VAC 50/60hz
Output Voltage	30-42Vdc
Output Current	180mA
Power Factor	>0.5 as standard; >0.9 optional
Efficiently	87% @230v
IP Rating	IP20
Dimmable	Non-Dimmable/Triac/0-10v/Dali Optional
Free Flicker	Yes
Certificates	CE, CB, CCC, ENEC
Warranty	3/5 Years

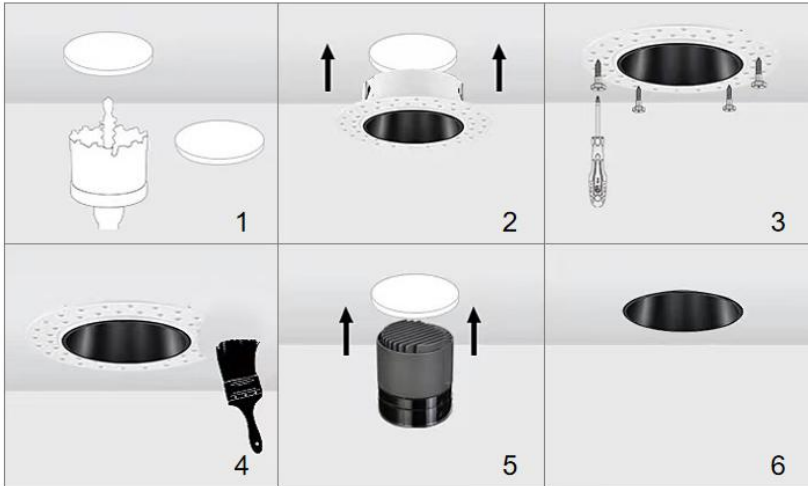
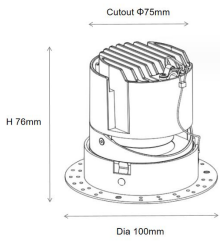
Material&Housing Data

Housing Color	White/Black
Reflector Color	White/ Black Glossy silver/Rose Golden/Glossy black/Matt silver/Rose golden/ Champagne golden
Housing Material	Die-casting Aluminum

Photometric Data

LED chip brand	Cree/ Osram /Bridgelux/ Epistar etc.
Chip Type	COB
Color Temperature	2700K, 3000K, 4000K, 5000K, 6000K
CRI	>80, >90
Life time	>50000Hrs
Lumens efficacy	100-120lm/w

Dimensions&Installation



PLEASE FIND A QUALIFIED ELECTRICIAN FOR INSTALLATION. Please read the instructions before you install and use the downlight.

1. Make sure the power is turned off in which you are installing the products.
2. Determine the position and size of the hole opening, and use a hole opener to make the hole. (Fig 1)
3. After cleaning the dust, insert the embedded parts. (Fig 2)
4. Fix with stainless steel screws. (Fig 3)
5. Plaster two to three times. (Fig 4)
6. Connect the wires to the wiring terminals of the lighting fixtures, Install the lamp body. (Fig 5)
7. Restore power at the source and the installation is complete. (Fig 6)