

# PRODUCT DATASHEET

## DOWNLIGHTS | SPOTLIGHTS-TRIMLESS

Downlights | Recessed mounted spotlight | 30w | Round shape

Code# TR01001-30



---

### Areas of Application

- Shops
- Hotel
- Club
- Corridors, stairways, entrance areas
- Galleries, museums residential interiors

---

### Product Features

- Module structure, separate embedded installation, adapted to different LED light source and beam angles
- Different colors and anti-glare designs of reflectors for choice, realizing spot, flood or wallwasher lighting effect
- Lamp can be adjusted the irradiation direction for precise lighting
- Die-cast aluminum housing, ensure excellent heat dissipation
- Energy savings of up to 90% compared to halogen lamp spotlights
- High luminous efficacy, high CRI
- CCT optional and dimmable
- Uniform light output and good consistency, without flicker

---

## Complete Product Data

|                            |                       |
|----------------------------|-----------------------|
| <b>Code#</b>               | TR01001-30            |
| <b>Wattage</b>             | 30w                   |
| <b>Installation Type</b>   | Recessed              |
| <b>Dimension</b>           | φ165mm*H151mm         |
| <b>Cutout</b>              | φ130mm                |
| <b>IP Rating</b>           | IP20, IP44            |
| <b>Luminous Flux</b>       | 2100lm                |
| <b>Beam Angle</b>          | 15°, 24°, 38°         |
| <b>Working Temperature</b> | -25°C ~55°C           |
| <b>Certificates</b>        | /                     |
| <b>Warranty</b>            | 3 Years               |
| <b>Packing Size</b>        | 18pcs/ CTN 50*47*36cm |

## Driver Data

|                       |   |
|-----------------------|---|
| <b>Driver Brand</b>   | Tridonic, Osram, Philips, Lifud, Euchips, Eaglerise, etc. |
| <b>Input Voltage</b>  | 100-250VAC 50/60hz  |
| <b>Output Voltage</b> | 24-42Vdc  |
| <b>Output Current</b> | 750mA   |
| <b>Power Factor</b>   | >0.5 as standard; >0.9 optional                           |
| <b>Efficiently</b>    | 87% @230v   |
| <b>IP Rating</b>      | IP20  |
| <b>Dimmable</b>       | Non-Dimmable/Triac/0-10v/Dali Optional                    |
| <b>Free Flicker</b>   | Yes   |
| <b>Certificates</b>   | CE, CB, CCC, ENEC   |
| <b>Warranty</b>       | 3/5 Years   |

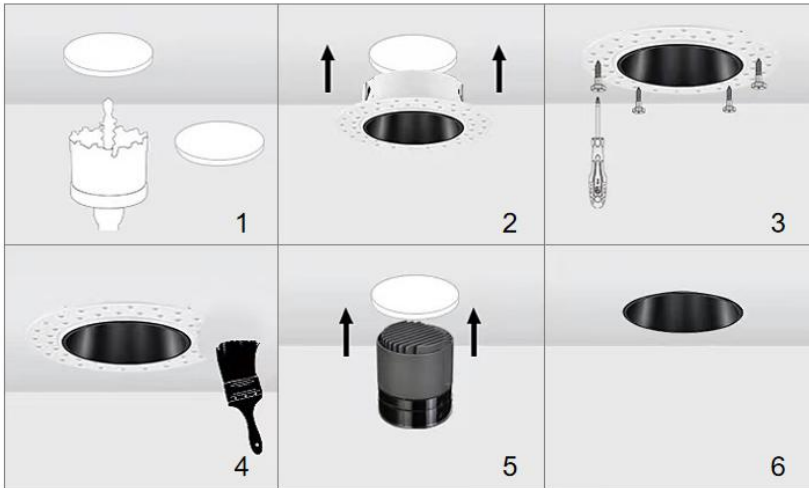
## Material&Housing Data

|                         |   |
|-------------------------|---|
| <b>Housing Color</b>    | White/Black                               |
| <b>Reflector Color</b>  | Black/ Glossy silver/ Golden/ Matt Silver |
| <b>Housing Material</b> | Die-casting Aluminum                      |

## Photometric Data

|                          |                                      |
|--------------------------|--------------------------------------|
| <b>LED chip brand</b>    | Cree/ Osram /Bridgelux/ Epistar etc. |
| <b>Chip Type</b>         | COB                                  |
| <b>Color Temperature</b> | 2700K, 3000K, 4000K, 5000K, 6000K    |
| <b>CRI</b>               | >80, >90                             |
| <b>Life time</b>         | >50000Hrs                            |
| <b>Lumens efficacy</b>   | 100-120lm/w                          |

## Dimensions&Installation



**PLEASE FIND A QUALIFIED ELECTRICIAN FOR INSTALLATION.** Please read the instructions before you install and use the downlight.

1. Make sure the power is turned off in which you are installing the products.
2. Determine the position and size of the hole opening, and use a hole opener to make the hole. (Fig 1)
3. After cleaning the dust, insert the embedded parts. (Fig 2)
4. Fix with stainless steel screws. (Fig 3)
5. Plaster two to three times. (Fig 4)
6. Connect the wires to the wiring terminals of the lighting fixtures, Install the lamp body. (Fig 5)
7. Restore power at the source and the installation is complete. (Fig 6)