

PRODUCT DATASHEET

DOWNLIGHTS | SPOTLIGHTS-SQUARE

Downlights | Recessed mounted spotlight | 10w | Square shape

Code# SS03009-10B



Areas of Application

- Shops
- Hotel
- Villa
- Restaurant
- Corridors, stairways, entrance areas
- Galleries, museums, residential interiors

Product Features

- High luminous efficacy, high CRI
- Uniform light output and good consistency, without flicker
- Energy savings of up to 90% compared to halogen lamp spotlights
- Die-cast aluminum housing, ensure excellent heat dissipation
- CCT optional and dimmable
- Easy and quick installation
- Lamp can be easily adjusted the irradiation direction for precise lighting
- Deep anti-glare designs of reflectors, realizing spot, flood or wallwasher lighting effect

Complete Product Data

Code#	SS03009-10B
Wattage	10w
Installation Type	Surface
Dimension	L60mm*W60mm*W147.7mm (44mm*44mm*105mm)
Cutout	50mm*50mm
IP Rating	IP20
Luminous Flux	700lm
Beam Angle	24°, 36°
Working Temperature	-25°C ~55°C
Certificates	/
Warranty	3 Years
Packing Size	/

Driver Data

Driver Brand	Tridonic, Osram, Philips, Lifud, Euchips, Eaglerise, etc.
Input Voltage	100-250VAC 50/60hz
Output Voltage	30-42Vdc
Output Current	250mA
Power Factor	>0.5 as standard; >0.9 optional
Efficiently	87% @230v
IP Rating	IP20
Dimmable	Non-Dimmable/Triac/0-10v/Dali Optional
Free Flicker	Yes
Certificates	CE, CB, CCC, ENEC
Warranty	3/5 Years

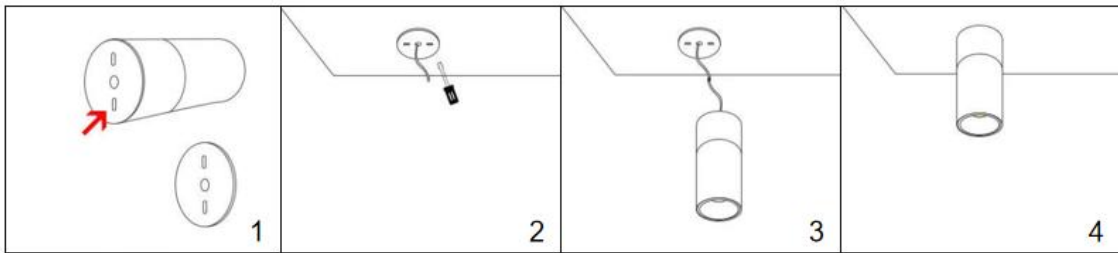
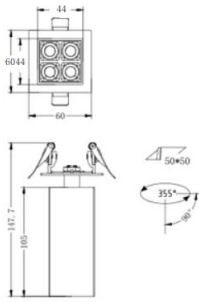
Material&Housing Data

Housing Color	White/ Black
Reflector Color	Black/ Transparent
Housing Material	Die-casting Aluminum

Photometric Data

LED chip brand	Cree/ Osram /Bridgelux/ Epistar etc.
Chip Type	COB
Color Temperature	2700K, 3000K, 4000K, 5000K, 6000K
CRI	>80, >90
Life time	>50000Hrs
Lumens efficacy	100-120lm/w

Dimensions&Installation



PLEASE FIND A QUALIFIED ELECTRICIAN FOR INSTALLATION. Please read the instructions before you install and use the downlight.

1. Make sure the power is turned off in which you are installing the products.
2. Remove the back cover separately. (Fig 1)
3. Fix the backplane with a screwdriver. (Fig 2)
4. Connect the wire and connect to the lamp body upwards. (Fig 3)
5. Restore power at the source and the installation is complete. (Fig 4)