

PRODUCT DATASHEET

DOWNLIGHTS | SPOTLIGHTS-MIN

Downlights | Recessed mounted spotlight | 7w | Round shape | Angle adjustable | Small cutout
Code# MN02005-7



Areas of Application

- Museum
- Exhibition hall
- Villa
- Club
- Shops
- Hotel

Product Features

- High luminous efficacy
- Die-cast aluminum housing, ensure excellent heat dissipation
- Uniform light output and good consistency
- CCT optional and dimmable
- Adjustable angle to make light emitting angle more controllable
- Easy and quick installation

Complete Product Data

Code#	MN02005-7
Wattage	7w
Installation Type	Recessed
Dimension	φ83mm*H110mm
Cutout	φ75mm
IP Rating	IP20
Luminous Flux	560lm
Beam Angle	15-60°
Working Temperature	-25°C ~55°C
Certificates	/
Warranty	3 Years
Packing Size	/

Driver Data

Driver Brand	Tridonic, Osram, Philips, Lifud, Euchips, Eaglerise, etc.
Input Voltage	100-250VAC 50/60hz
Output Voltage	30-42Vdc
Output Current	180mA
Power Factor	>0.5 as standard; >0.9 optional
Efficiently	87% @230v
IP Rating	IP20
Dimmable	Non-Dimmable/Triac/0-10v/Dali Optional
Free Flicker	Yes
Certificates	CE, CB, CCC, ENEC
Warranty	3/5 Years

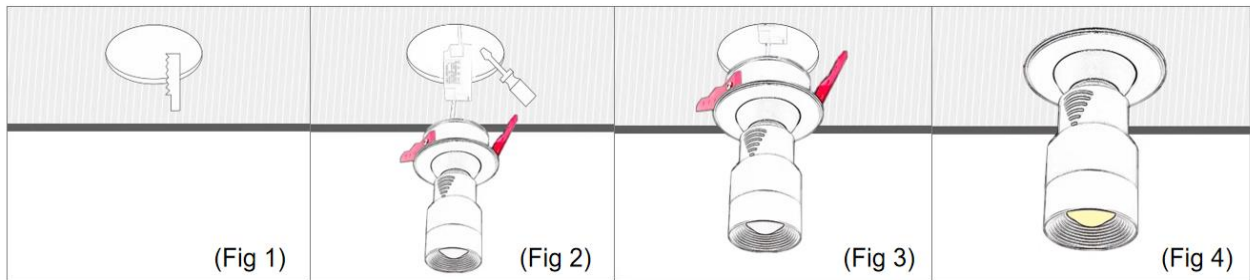
Material&Housing Data

Housing Color	Black
Reflector Color	Black
Housing Material	Die-casting Aluminum

Photometric Data

LED chip brand	Cree/ Osram /Bridgelux/ Epistar etc.
Chip Type	COB
Color Temperature	2700K, 3000K, 4000K, 5000K, 6000K
CRI	>80, >90
Life time	>50000Hrs
Lumens efficacy	100-120lm/w

Dimensions&Installation



PLEASE FIND A QUALIFIED ELECTRICIAN FOR INSTALLATION. Please read the instructions before you install and use the downlight.

1. Make sure the power is turned off before installing the products.
2. Determine cutout size (Fig 1)
3. Insert lamp conduit into the box and wire to power source (black to hot, white to neutral) (Fig 2)
4. Press the shrapnel to push the lamp into the hole. (Fig 3)
5. Once lamp is inside the housing, release the housing clips and continue pushing lamp into housing until securely fixed and flush with ceiling. (Fig 4)
6. Restore power at the source and the installation is completed.